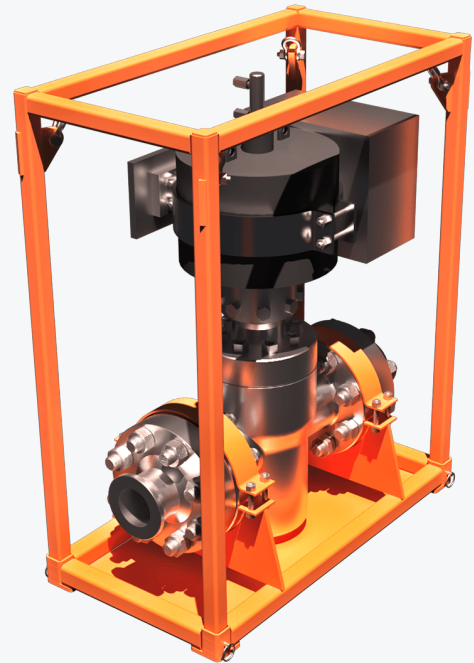




Product Summary

5K SSV is a surface safety valve designed for contingency at any flowback operations. The unit is equipped with remote shutdown points that can be installed in any desired area.

The 5K SSV can be used in conjunction with any FourPhase flowback equipment or as a standalone application. Using a pneumatically actuated design increases process safety by significantly reducing valve closing times to one or two seconds. The SSV unit is suitable for use in an ATEX Zone II (Zone I optional) hazardous area.



- Pneumatically activated
- Remotely operated with ESD button.
- Remotely operated with Hi / Low pilot switches.
- Remotely operated with ATEX Zone 1 electric solenoid.



Technical Specification

SI U.S.

Pressure

Working Pressure: 1-345 bar (1-5000 psi)

Design Pressure: 345 bar (5000 psi)

Operation

SSV close time: 1.5 sec

SSV opening time: 3.0 sec

Dimensions

Height: 1373 mm (4.5 ft)

Width: 800 mm (2.6 ft)

Depth: 1200 mm (3.9 ft)

Weight: 830 kg (1 830 lbs)

Interfaces

Flow piping: 4"

Flanges: 4-1/16"

Temperature

Min operating temp: -28 °C (-18,4 °F)

Max operating temp: +120 °C (+248 °F)

Certification

NACE MR0175-97

DNV 2.7.3 Lifting equipment

API-6A

Norsok Z-015

ATEX Zone II (Zone I optional)

Materials

Frame: Carbon steel, NVE 36Inner

Valve body: AISI410

Seal rings: Duplex / 316L / 6MO